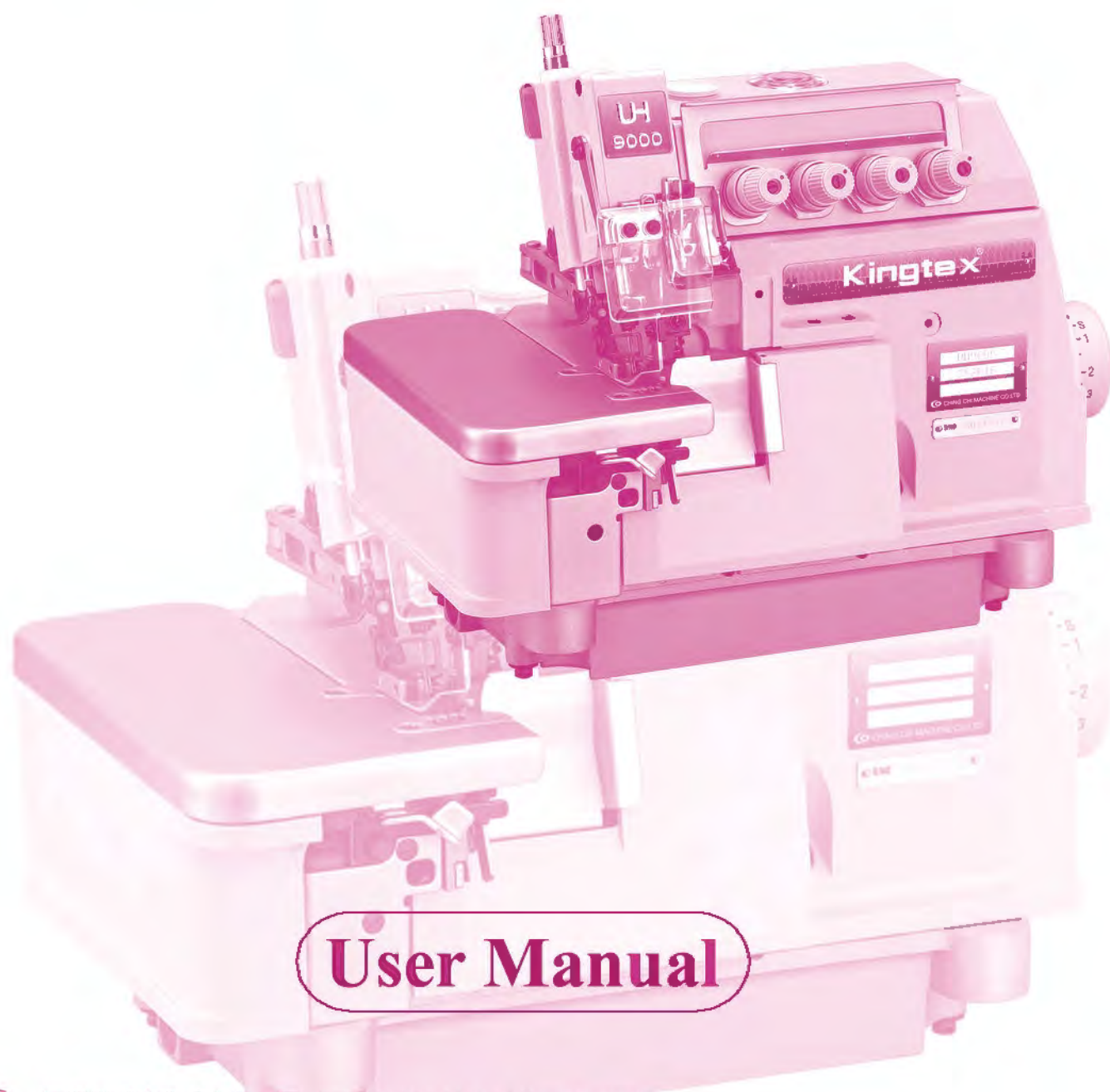


UH SERIES

寶獅牌工業用縫紉機 INDUSTRIAL SEWING MACHINE

**MODEL
UH9000**



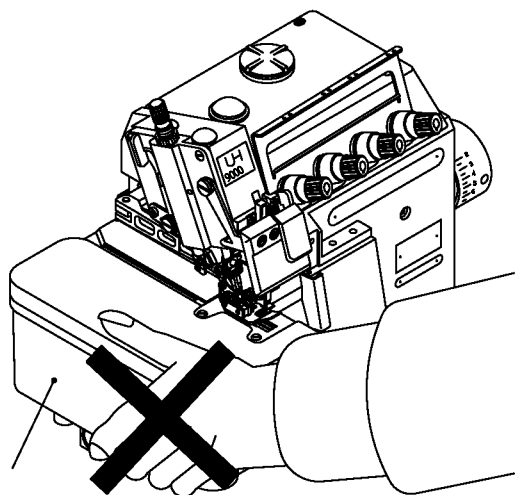
User Manual



精機機械廠股份有限公司 CHING CHI MACHINE CO., LTD
<http://www.kingtexsewing.com.tw>

1. INSTALLATION

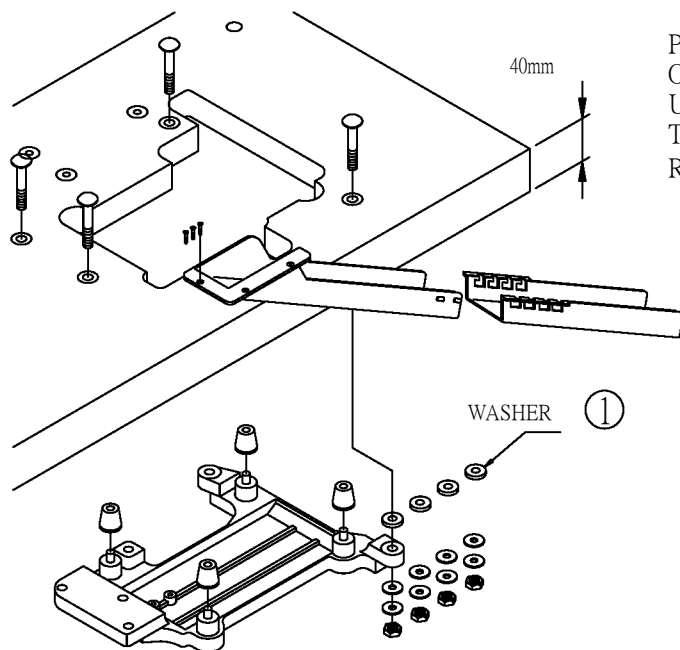
1-1 MOVING:



CLOTH PLATE COVER

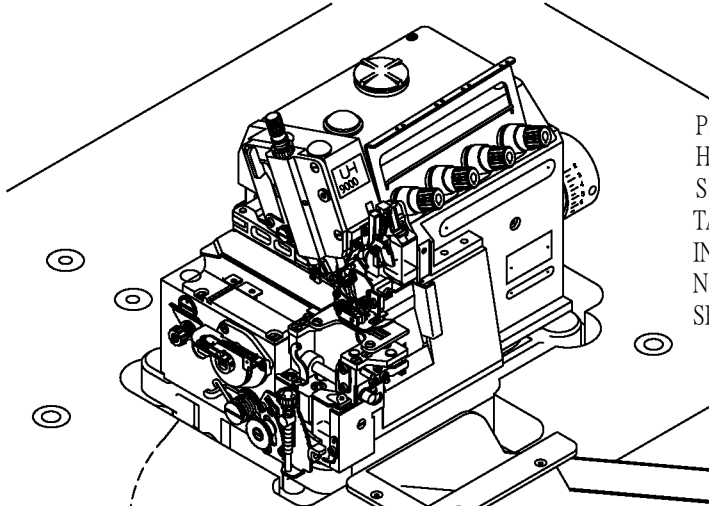
DURING INSTALLATION
PROCESS , DO NOT MOVE
SEWING MACHINE BY
HOLDING CLOTH PLATE.

1-2 INSTALLATION OF FRAME SUPPORT PLATE AND WASTE CHUTE:



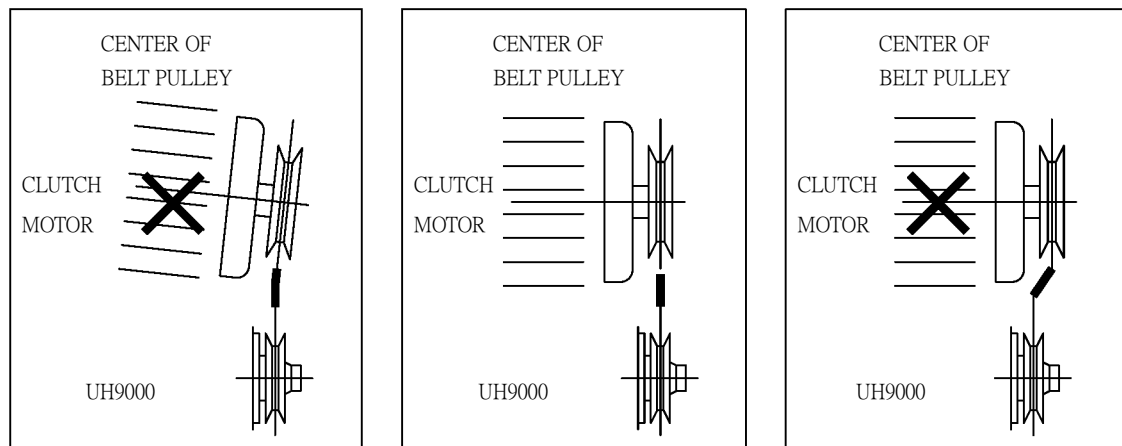
PLEASE USING STANDARD TABLE
OF 40 mm IN THICKNESS . IF
USE THE TABLE IN 35 mm IN
THICKNESS , THEN , PLEASE
REFER TO INSTALLATION MAP .

1-3 INSTALLATION OF SEWING MACHINE :

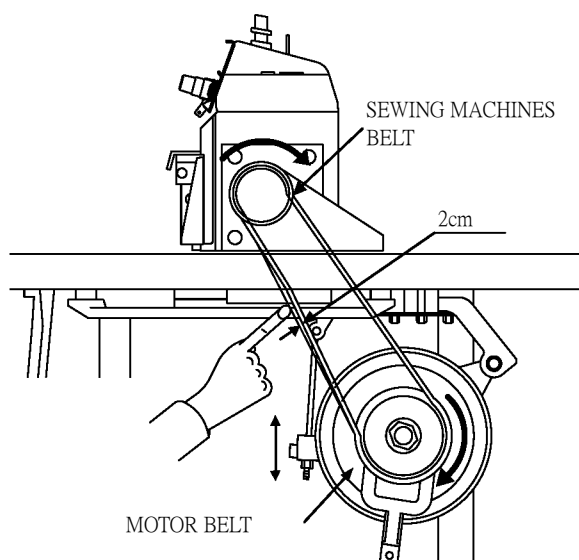


PLEASE MAKE SURE THERE
HAVE ENOUGH ROOM BETWEEN
SEWING MACHINE AND THE
TABLE AROUND IT AFTER
INSTALLATION . TABLE CAN
NOT INTERFERENCE WITH THE
SEWING MACHINE .

1-4. INSTALLATION OF MOTOR BELT :

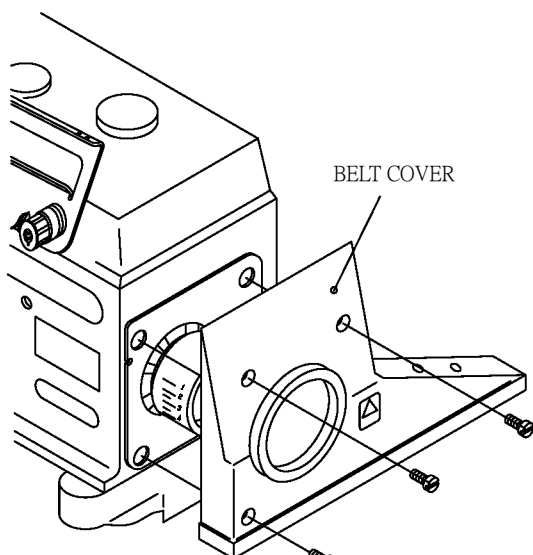


INSTALL MOTOR BELT AND MAKE SURE MOTOR BELT IN PARALLEL WITH BOTH PULLEY OF CLUTCH MOTOR AND SEWING MACHINE BY ADJUSTING CLUTCH MOTOR'S POSITION PROPERLY .



INSTALL MOTOR BELT AND MAKE SURE THERE HAVE 2 c.m. TOLERANCE BY PRESS THE MOTOR BELT.

1-5 INSTALLATION OF BELT COVER :

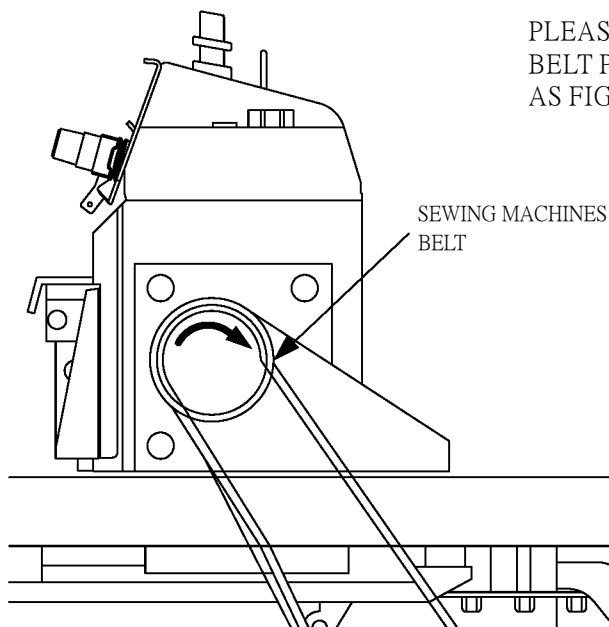


FOR SAFTY REASON , BELT COVER MUST BE INSTALLED .

2. BEFORE OPERATION :

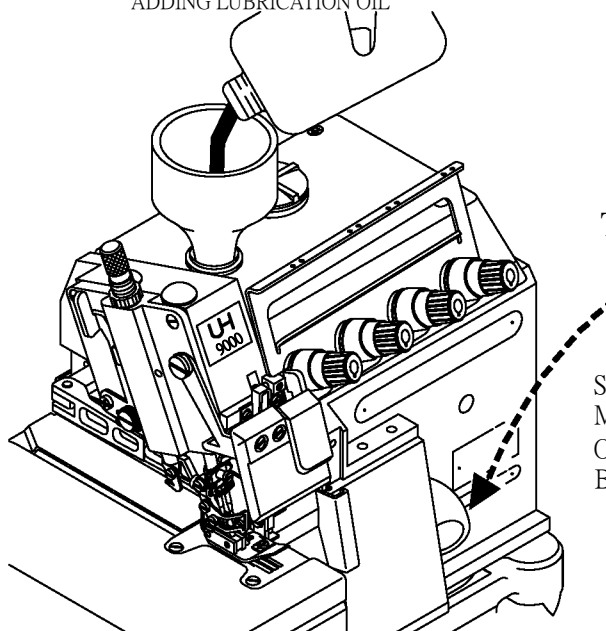
2-1 TURNING DIRECTION OF BELT PULLEY:

PLEASE MAKE SURE SEWING MACHINE'S
BELT PULLEY IS TURNING CLOCKWISE .
AS FIGURE 2-1 .



2-2 ADDING LUBRICATION OIL AND SILICON OIL :

ADDING LUBRICATION OIL



DURING ADDING PROCESS ,
PLEASE MAKE SURE THE
LUBRICATION OIL CAN NOT OVER
THE UPPER LIMIT OF OIL
GAUGE .

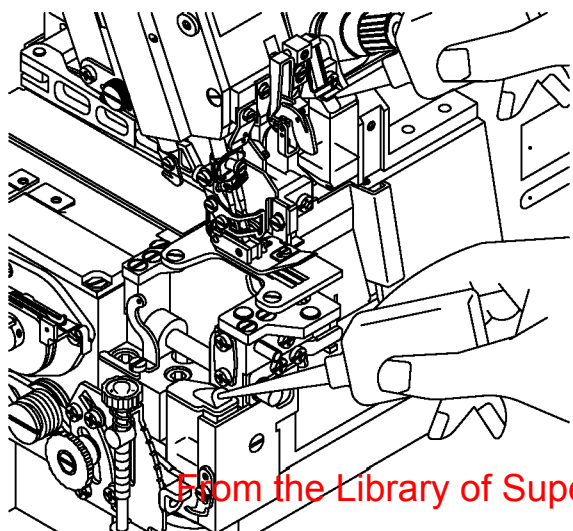
TOP



LOW

SPECIFICATION OF LUBRICATION OIL:
MOBIL VELOCITE OIL NO.10(ISO/VG22).
OR SAME SPECIFICATION OF OTHER
BRAND'S OIL .

ADDING SILICON OIL



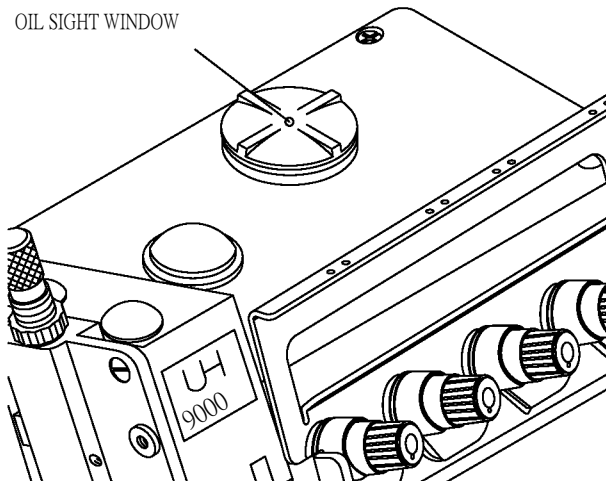
PLEASE ADD PROPER SILICON OIL INTO
SILICON OIL RESERVOIRS IN ORDER TO
PREVENT THREAD BREAKAGE.

SPECIFICATION OF SILICON OIL:
UNION CARBIDE CORP. UCC L-45 (10)
OR SAME SPECIFICATION OF OTHER
BRAND'S SILICON OIL .

3. TEST SEWING AND ADJUSTING :

3-1 DESCRIPTION :

EVEN THOUGHT THE MACHINE IS UNDER ITS BEST NORMAL SEWING CONDITION WHEN OUT OF THE FACTORY ,HOWEVER , DUE TO DIFFERENT SEWING REQUIREMENTS ,SUCH AS SEWING FABRICS ,SEWING THREADS ,IT MAY REQUIRED MINOR ADJUSTNENTS ON SEWING MACHINES AS FOLLOWS:

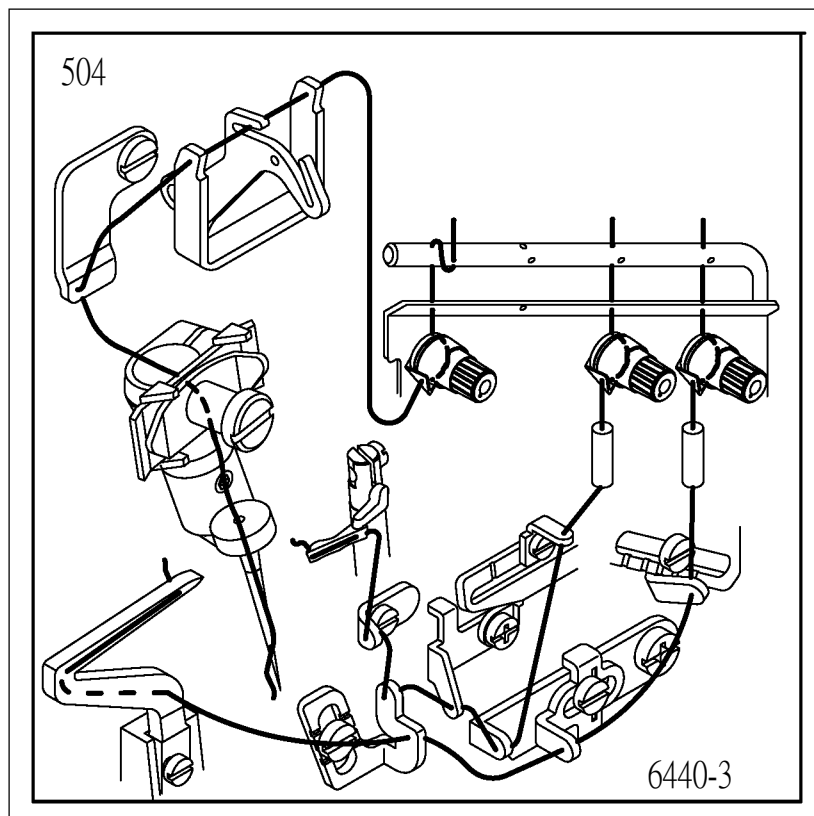


DURING THE FIRST USAGE ,PLEASE MAKE SURE LUBRICATION OIL CIRCULATES PROPERLY.

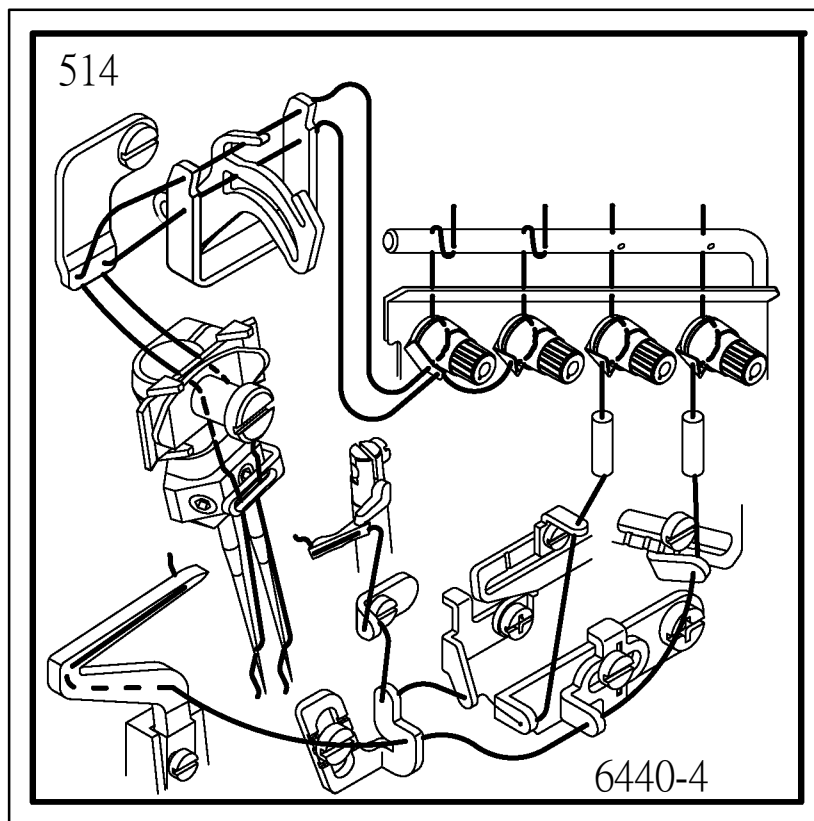
3-2 THREADING MAP :

MISTTHREADING WILL CAUSE THREAD BREAKAGE , SKIP STITCH OR OTHER SEWING DEFECTS ,THUS ,PLEASE MAKE SURE FOLLOW THE THREADING MAP AND THREADING PROPERLY .

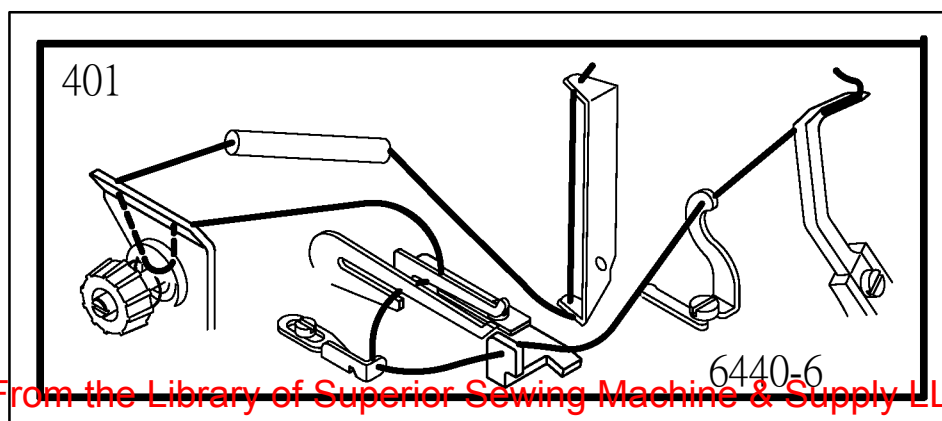
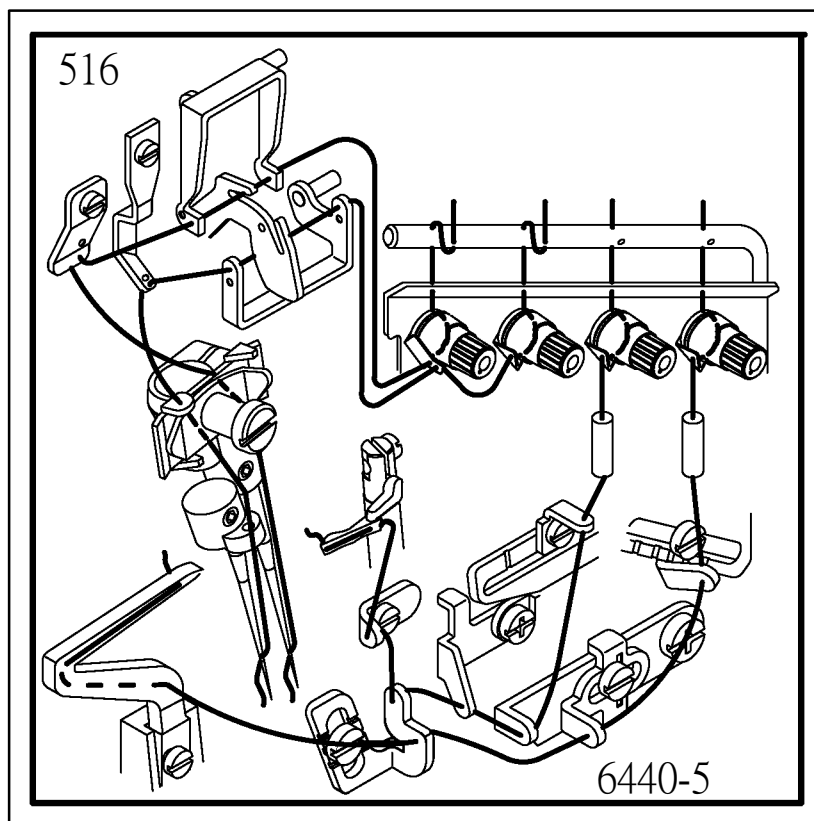
Uh9003 .STITCH TYPE 504 .

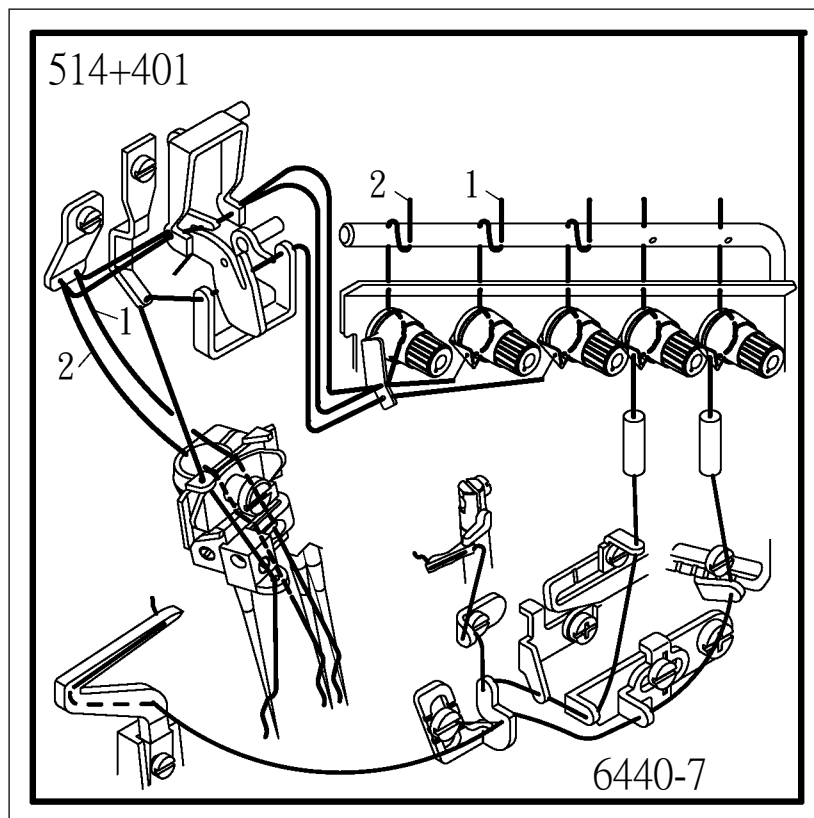


UH9004 . STITCH TYPE 514 .

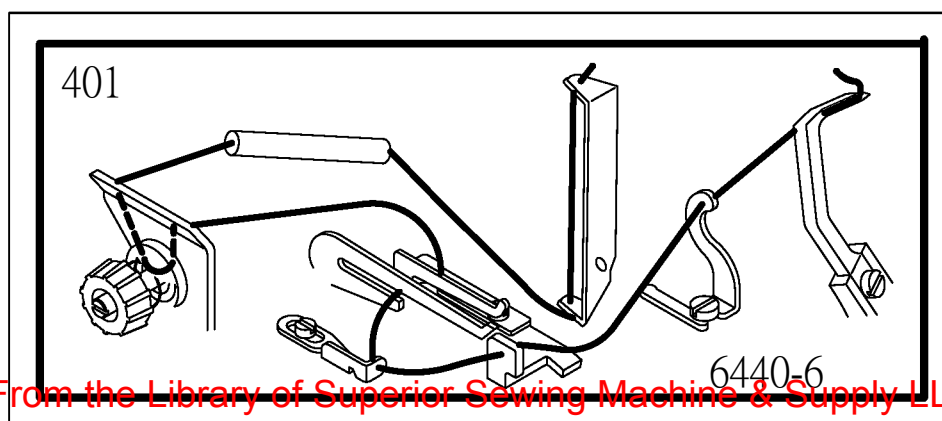
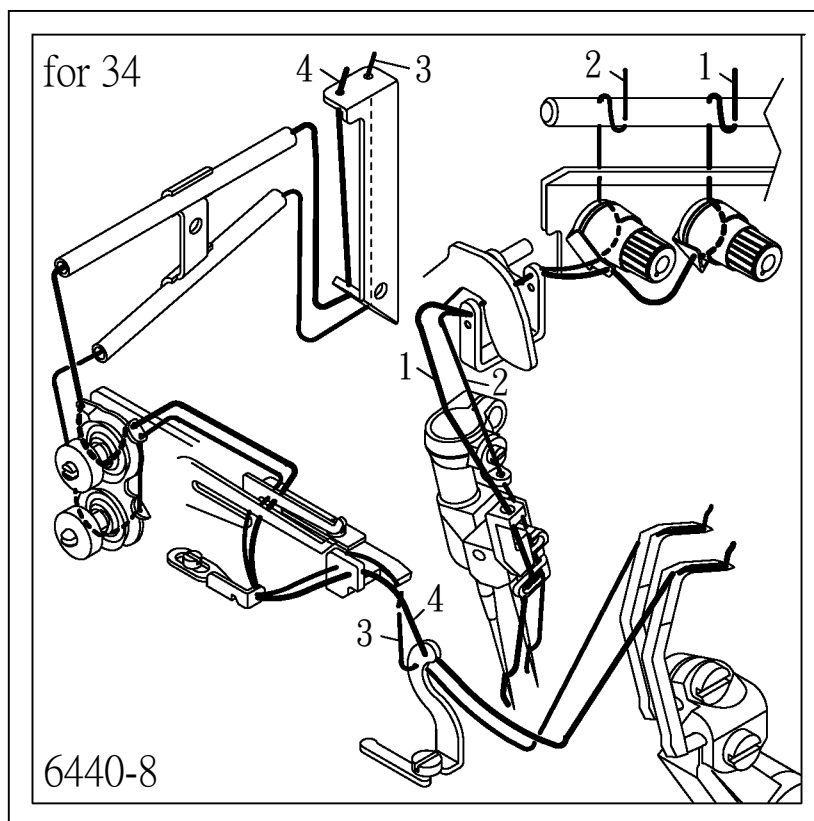


UH9005 . STITCH TYPE 516 .

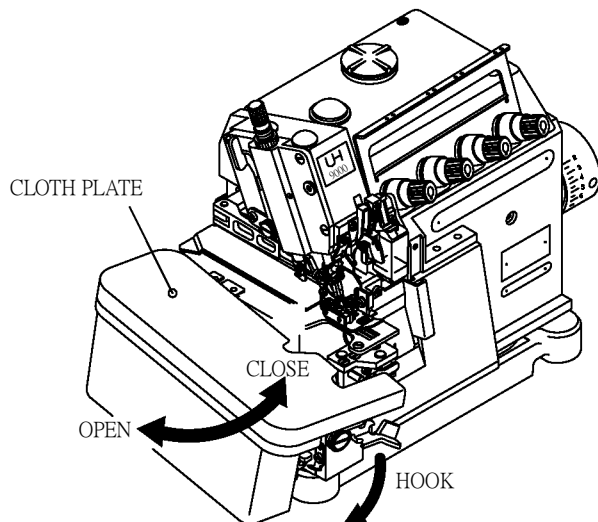




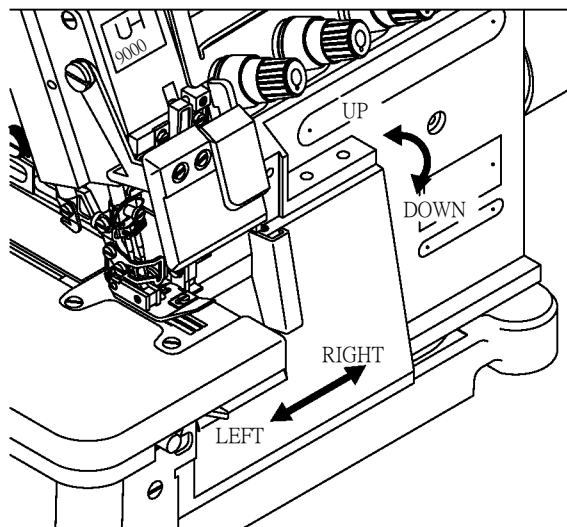
UH9034



3-3 OPEN AND CLOSE THE CLOTH PLATE AND FRONT COVER :

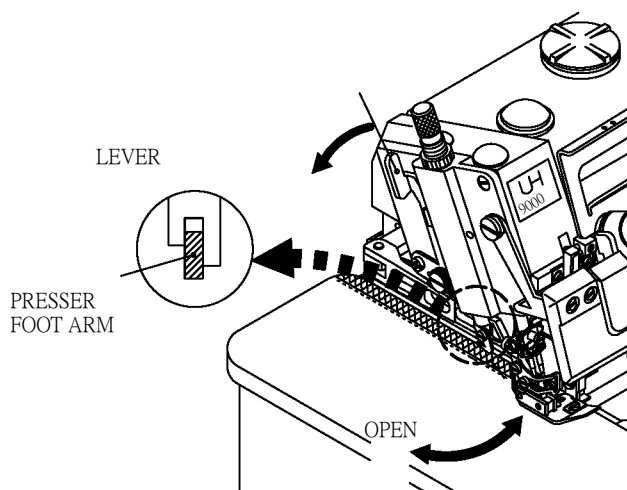


PRESS DOWN HOOK AND PUSH TO LEFT IN ORDER TO OPEN CLOTH PLATE , PUSHING RIGHT TO ITS HOOK SET POSOTION , THE CLOTH PLATE WILL BE CLOSED .

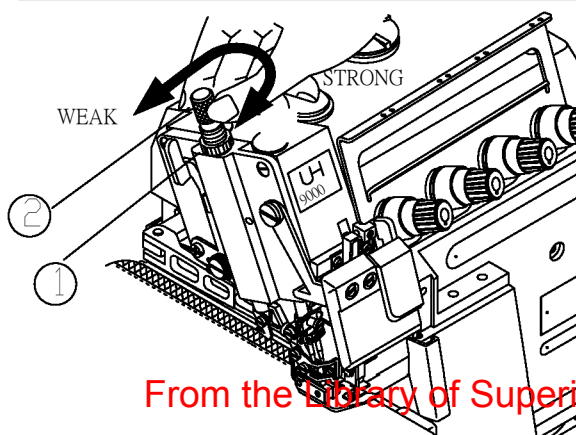


OPEN AND CLOSE FRONT COVER : PUSHING FRONT COVER TO RIGHT SET POSITION AND PULL DOWN TO OPEN IT . AND ON THE OTHER HAND , PULL UP TO ITS SET POSITION AND TO LEFT IN ORDER TO CLOSE FRONT COVER . AFTER CLOSING FRONT COVER , PLEASE MAKE SURE THERE IS NO INTERFERENCE BETWEEN FRONT COVER AND OTHER PARTS .

3-4 OPEN AND CLOSE THE PRESSER FOOT ARM AND ADJUSTING PRESSURE :

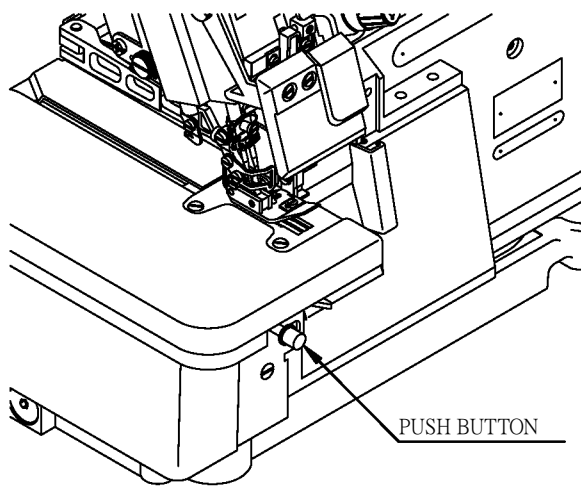


OPEN AND CLOSE THE PRESSER FOOT ARM : PUSH LEVER DOWN TO ITS SET POSITION THEN TAKE OUT PRESSER FOOT ARM . VICE VERSA , PUSH DOWN LEVER TO ITS SET POSITION , CAN PUT PRESSER FOOT ARM BACK . WHEN PUT PRESSER FOOT ARM BACK , PLEASE MAKE SURE IT WILL BE BACK TO ITS SET POSITION .

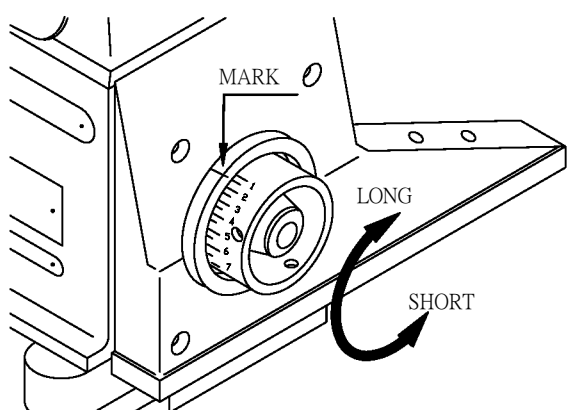


ADJUSTING PRESSURE
TURNING ADJUSTING SCREW
CLOCKWISE IN ORDER TO INCREASE PRESSURE .
TURNING ADJUSTING SCREW
COUNTERCLOCKWISE IN ORDER TO
DECREASE PRESSURE .

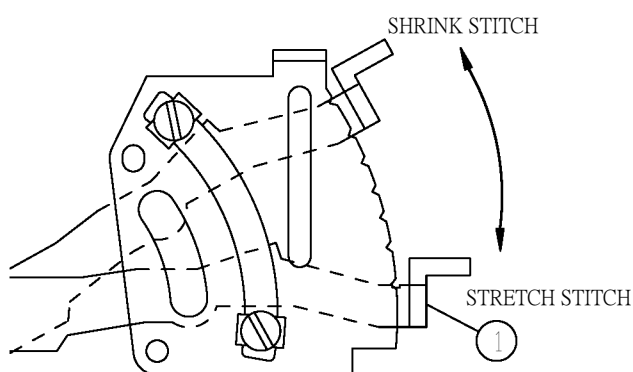
3-5 ADJUSTING STITCH LENGTH AND DIFFERENTIAL RATIO :



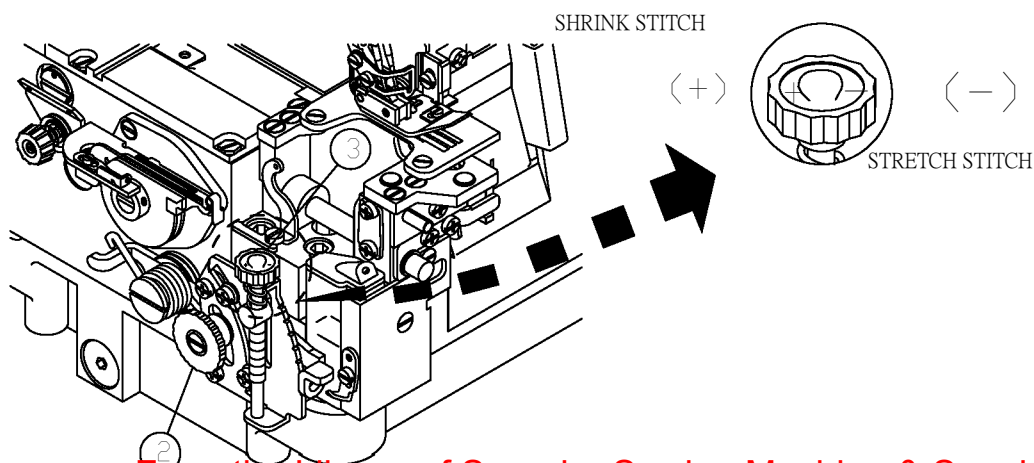
ADJUSTING STITCH LENGTH :
PUSHING THE PUSH BUTTON
LIGHTLY FIRST AND TURNING
PULLEY TO SET POSITION THEN
PUSHING DOWN THE PUSH BUTTON
INTO ITS SET POSITION AND ADJUST
THE LENGTH OF STITCH .



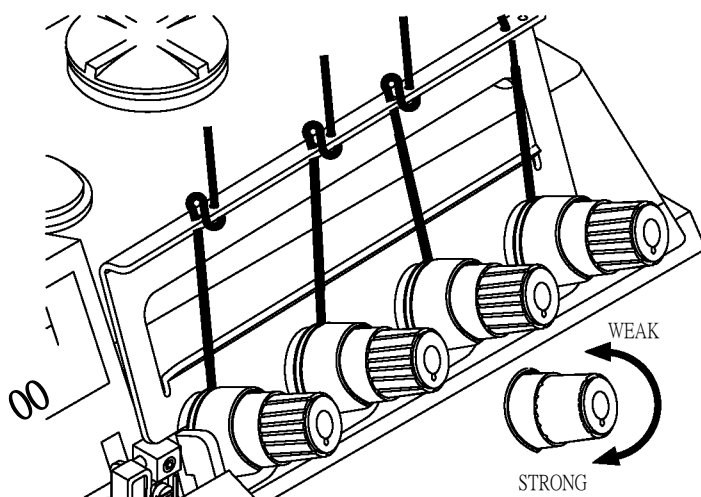
REMARK : THE DISTANCE MARK ON
THE PULLEY ONLY REPRESENT
APPROX LENGTH OF STITCH AND
ACTUAL STITCH LENGTH NEEDED
SHOULD GET FROM TEST SEWING .



ADJUSTING DIFFERENTIAL RATIO :
DIFFERENTIAL RATIO WAS SET AT 1 : 1
WHEN MACHINES WERE OUT OF
FACTORY . ADJUST DIFFERENTIAL
RATIO AS NEEDED .
OPEN UP CLOTH PLATE , LOOSEN NUT
(2) MOVE LEVEL (1) UPWARD OR
DOWNWARD TO THE POSITION NEEDED.
THEN TIGHTEN NUT (2) . FOR
MICRO-ADJUSTMENT PLEASE TURN
ADJUSTING SCREW (3) .

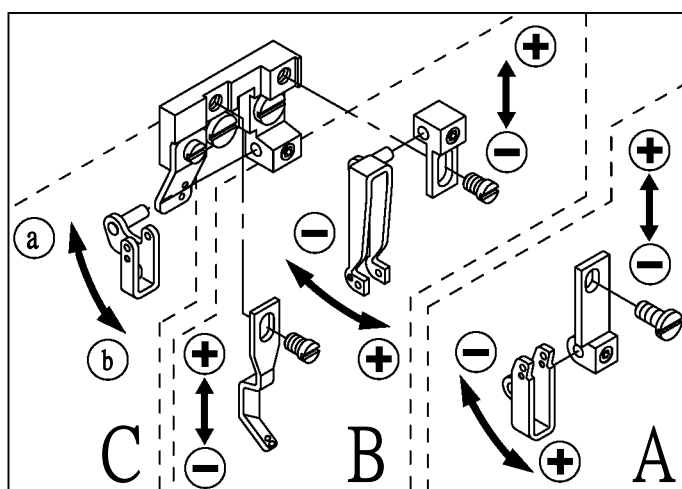


3-6 ADJUSTING THREAD TENSION AND TENSION AMOUNT :



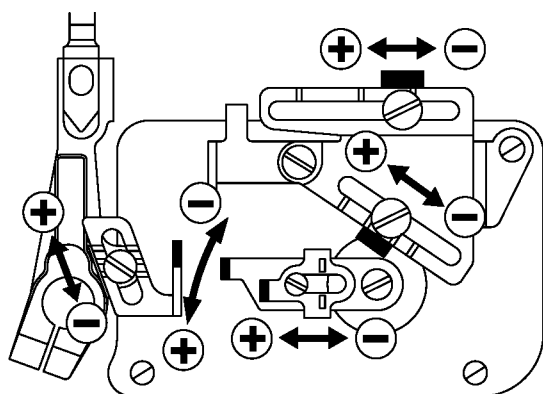
ADJUSTING THREAD TENSION
THREAD TENSION CORRELATE WITH
THREAD TENSION AMOUNT . PLEASE
REFER TO THIS ITEM AND NEXT ITEM
TO ADJUST THREAD TENSION
AMOUNT IN ORDER TO GET BEST
RESULT .
TURNING CLOCKWISE IN ORDER TO
GET STRONG THREAD TENSION .
TURNING COUNTERCLOCKWISE IN
ORDER TO GET WEAK THREAD
TENSION .

NEEDLE THREAD TENSION AMOUNT :



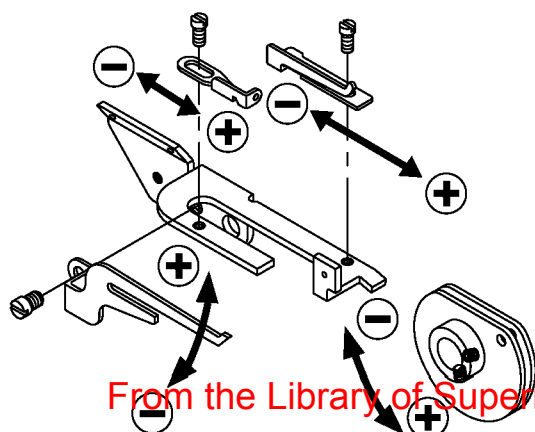
A : FOR UH-9003 , UH-9004 USAGE .
TOWARD (+) DIRECTION GET
BIGGER THREAD TENSION AMOUNT .
TOWARD (-) DIRECTION GET
SMALLER THREAD TENSION AMOUNT .
B : FOR UH-9005 USAGE .
TOWARD (+) DIRECTION IN ORDER
TO GET BIGGER THREAD TENSION AMOUNT
TOWARD (-) DIRECTION IN
ORDER TO GET SMALLER THREAD
TENSION AMOUNT .
C : IF CHAIN STITCH NEEDLE THREAD
LOOP FORMED TOO EARLY , PLEASE
ADJUST THREAD GUIDE TO ③
DIRECTION .

UPPER / LOWER LOOPER THREAD TENSION AMOUNT :



PLEASE ADJUST TENSION AMOUNT
ACCORDING TO ARROW DIRECTION
(+) INCREASE LOOPER THREAD
TENSION AMOUNT .
(-) DECREASE LOOPER THREAD
TENSION AMOUNT .

CHAINSTITCH LOOPER THREAD TENSION AMOUNT :

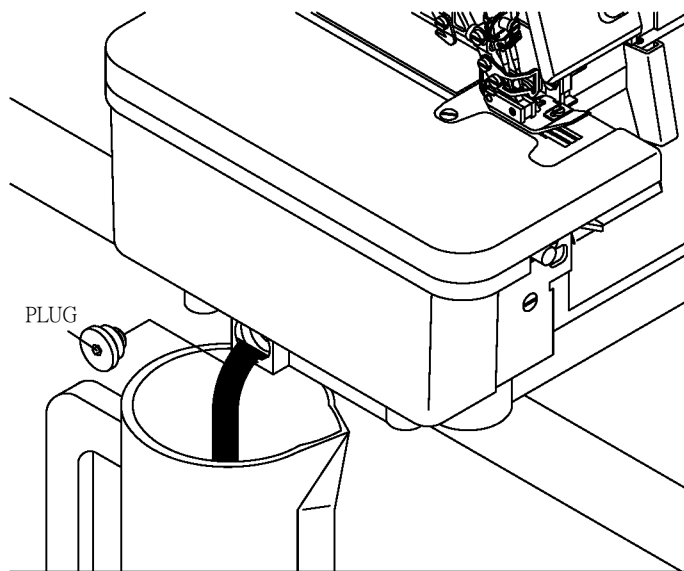


WHEN ADJUSTING CHAINSTITCH
LOOPER THREAD , IF THREAD LOOP
COLLAPSE , UNSTABLE OR CAN NOT
FORM THREAD LOOP , PLEASE ADJUST
THREAD TENSION AMOUNT
ACCORDING TO ARROW DIRECTION
(+) INCREASE .
(-) DECREASE .

4. REPAIRING AND MAINTENANCE :

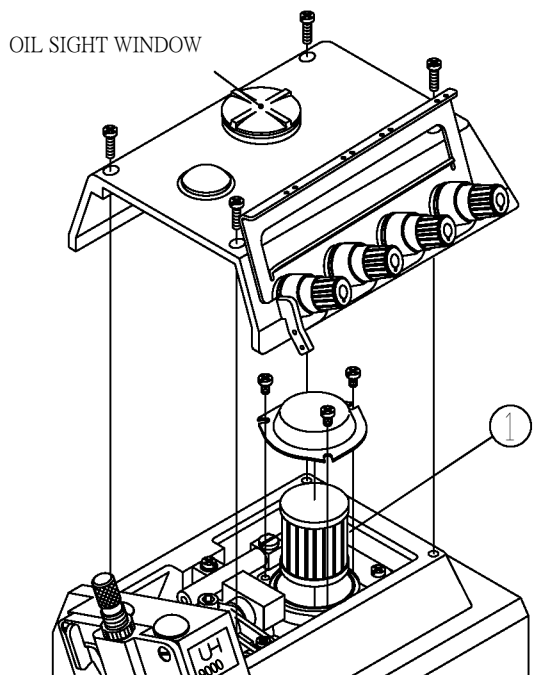
4-1 CHANGING LUBRICATION OIL , OIL FILTER AND NEEDLES

CHANGE LUBRICATION OIL .



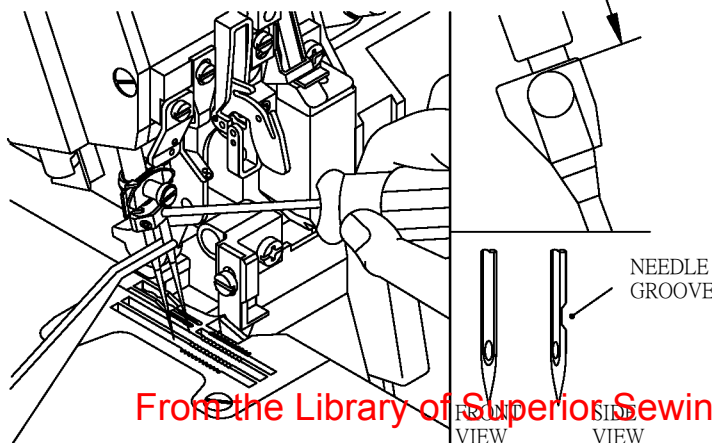
AFTER OPERATING SEWING MACHINE FOR 160-200 HOURS (APPROX ONE MONTH .) PLEASE CHANGE LUBRICATION OIL AND CHANGE LUBRICATION OIL EVERY 6 MONTHS THEREAFTER . IF STOP USING SEWING MACHINE FOR A LONG TIME , PLEASE CHANGE LUBRICATION OIL BEFORE OPERATE AGAIN . CHANGE LUBRICATION OIL BY TAKE OFF PLUG .

CHANGE OIL FILTER



PLEASE CHANGE OIL FILTER AFTER APPROX 6 MONTHS USAGE OR FOUND OUT OIL CIRCULATION WAS NOT NORMAL FROM OIL SIGHT WINDOW .

CHANGE NEEDLES

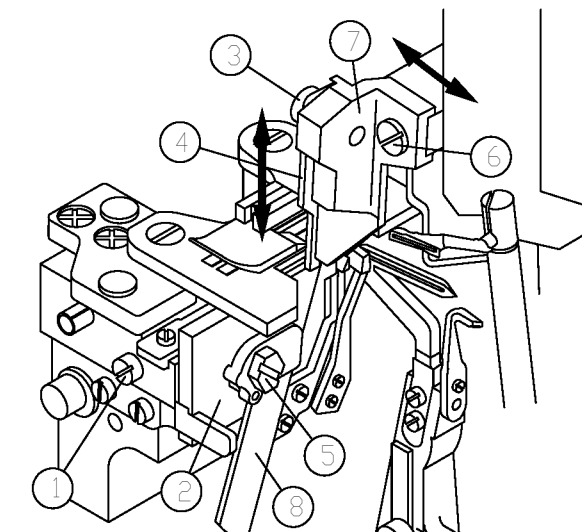


MAKE SURE TO INSERT NEEDLES ALL THE WAY TO THE BOTTOM OF NEEDLE HOLES .

WHEN CHANGING NEEDLES , PLEASE MAKE SURE NEEDLE GROOVE IS IN ITS CORRENT POSITION AND ALSO MAKE SURE NEEDLES BE INSERTED ALL THE WAY TO THE BOTTOM OF NEEDLE HOLES .

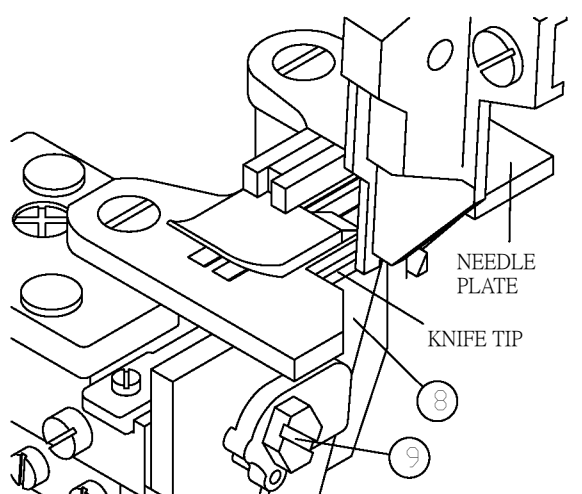
4-2 CHANGING UPPER , LOWER KNIFE :

CHANGING UPPER KNIFE:

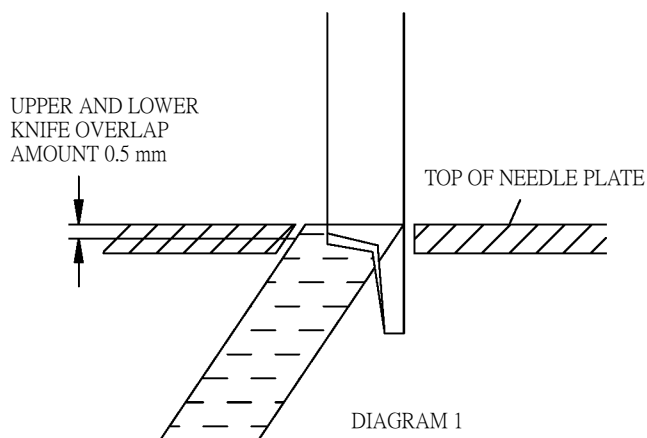


- A . LOOSEN SCREW (1) PUSH LOWER KNIFE HOLDER (2) TO LEFT , THEN , TIGHTEN SCREW (1) LIGHTY .
- B . TAKE OFF SCREW (3) CHANGE NEW UPPER KNIFE (4) . THEN , TIGHTEN SCREW (3) LIGHTLY .
- C . LOOSEN SCREW (1) MAKE SURE LOWER KNIFE (8) TOUCH UPPER KNIFE CLOSELY .
- D . TURNING HAND WHEEL TILL UPPER KNIFE CLAMP REACH ITS LOWEST POSITION . THEN , ADJUSTING THE POSITION OF UPPER KNIFE IN ORDER TO MAKE SURE UPPER KNIFE AND LOWER KNIFE OVERLAP BY 0.5 mm .
- E . TIGHTEN SCREW (3) , (1) .

CHANGING LOWER KNIFE

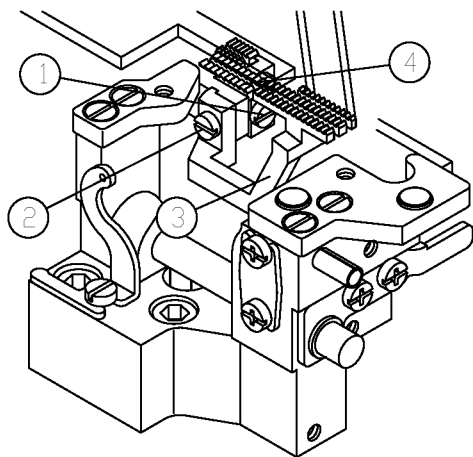


- A . LOOSEN SCREW (1) PUSH LOWER KNIFE HOLDER (2) TO LEFT , THEN , TIGHTEN SCREW (1) LIGHTY .
- B . LOOSEN SCREW (9) TAKE OFF OLD LOWER KINFE (8) AND CHANGE NEW LOWER KNIFE .
- C . MAKE SURE THE TIP OF LOWER KNIFE LINE EVEN WITH THE TOP OF NEEDLE PLATE . THEN , TIHGTEN SCREW (9) .
- D . LOOSEN SCREW (1) MAKE SURE LOWER KNIFE TOUCH UPPER KNIFE (4) CLOSELY . THEN , TIGHEN SCREW (1) .



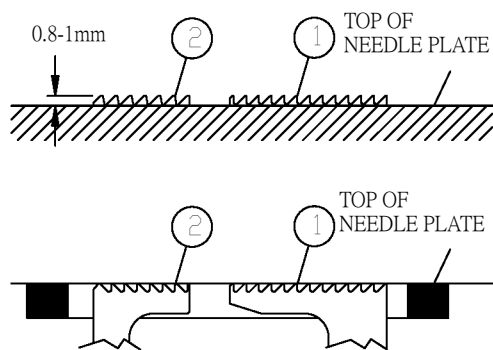
4-3 CHANGING AND ADJUSTING FEED DOGS .

CHANGING FEED DOGS .



LOOSEN SCREW (1) CAN CHANGE MAIN FEED DOG (4) ,
LOOSEN SCREW (2) CAN CHANGE DIFFERENTIAL FEED DOG (3) .
AFTER CHANGED FEED DOGS ,
TIGHTEN SCREWS LIGHTLY . PLEASE REFER TO FOLLOWING ITEMS IN ORDER TO SET UP CORRECT POSITION OF FEED DOGS . THEN ,
TIGHTEN SET SCREWS .

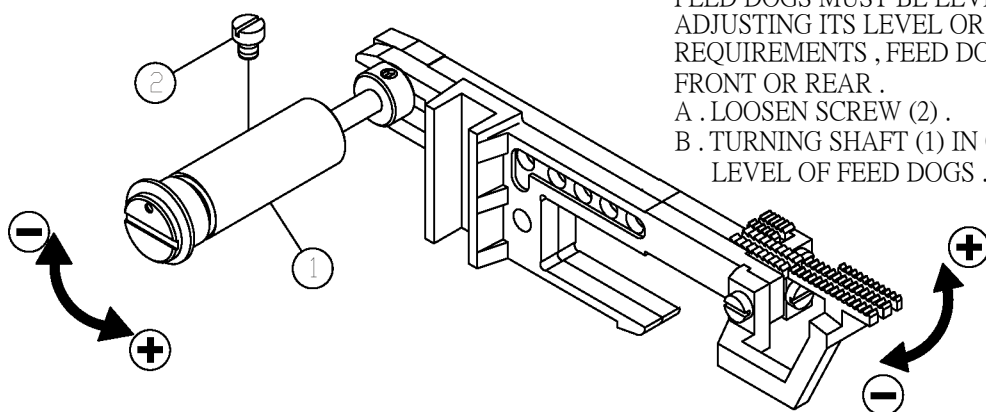
ADJUSTING FEED DOGS AFTER CHANGED :



AFTER CHANGE FEED DOGS , MUST ADJUST FEED DOGS TO ITS CORRECT POSOTION . TURNING BELT PULLEY , MAKE SURE MAIN FEED DOG (2) TO ITS HIGHEST POSITION , MAKE SURE THE TIP OF FEED DOG TEETH HIGHER THAN TOP OF NEEDLE PLATE BY 0.8-1 mm . (STANDARD SETTING VALUE) THEN , TURNING BELT PULLEY , LOWERING MAIN FEED DOG , MAKE SURE THE TIP OF TEETH LINE EVEN WITH TOP OF NEEDLE PLATE , THEN , ADJUSTING THE TIP OF TEETH OF DIFFERENTIAL FEED DOGS LINE EVEN WITH TOP OF NEEDLE PLATE . AFTER SET UP , TIGHTEN SCREW (1) , (2) AND MAKE SURE FEED DOGS ARE AT ITS CORRECT POSITION AGAIN .

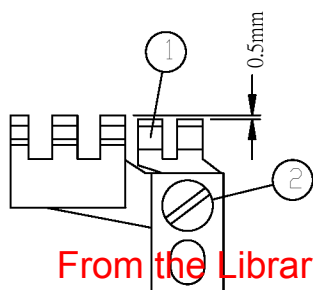
AFTER ADJUSTING , PLEASE TIGHTEN SCREW (1) , (2)
AND IN THE SAME TIME , PLEASE MAKE SURE
a. IF FEED DOGS WILL RAISE 0.8~1 mm . ABOVE
THE TOP OF NEEDLE PLATE BY TURNING BELT PULLEY
AND MOVING FEED DOG UP .
b. IF FEED DOGS WILL HIDE UNDERNEATH THE NEEDLE
PLATE BY KEEP TURNING BELT PULLEY .

ADJUSTING FEED DOGS LEVEL (TILT AMOUNT) :



DURING FEED DOGS MOVEMENT , THE TEETH OF FEED DOGS MUST BE LEVEL OFF ALWAYS .
ADJUSTING ITS LEVEL OR DURING SOME SPECIAL REQUIREMENTS , FEED DOG TEETH MUST TILT TO FRONT OR REAR .
A . LOOSEN SCREW (2) .
B . TURNING SHAFT (1) IN ORDER TO ADJUST LEVEL OF FEED DOGS .

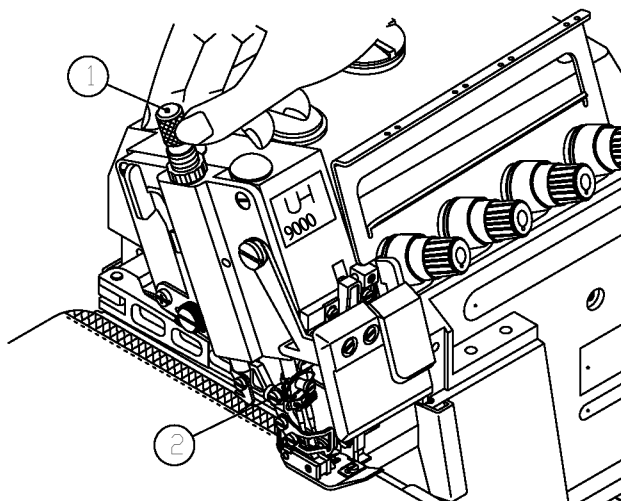
ADJUSTING THE HEIGHT OF AUXILIARY FEED DOG:



THE HEIGHT OF AUXILIARY FEED DOG SHOULD BE 0.5 mm LOWER THAN MAIN FEED DOG (STANDARD SETTING VALUE) AND ADJUSTMENT CAN BE MADE BY LOOSEN SCREW (2) .

4-4 CHANGING AND ADJUSTING PRESSER FOOT SET

CHANGE PRESSER FOOT SET :

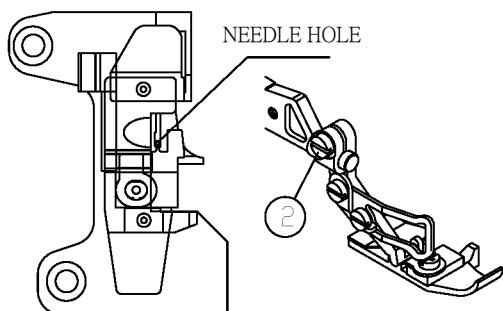


TURNING ADJUSTING SCREW (1) COUNTERCLOCKWISE IN ORDER TO LOOSE PRESSURE SPRING .
LOOSEN SCREW (2) CAN TAKE OFF PRESSER FOOT SET .

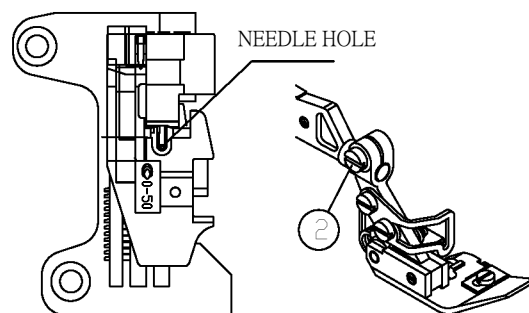
ADJUSTING:

PRESSER FOOT MUST BE INSTALLED CORRECTLY IN ORDER TO OBTAIN BEST SEWING EFFECTS .

UH9003 UH9004



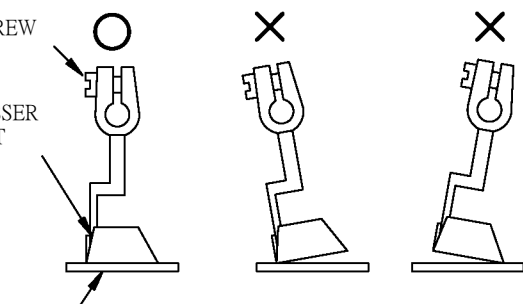
UH9005



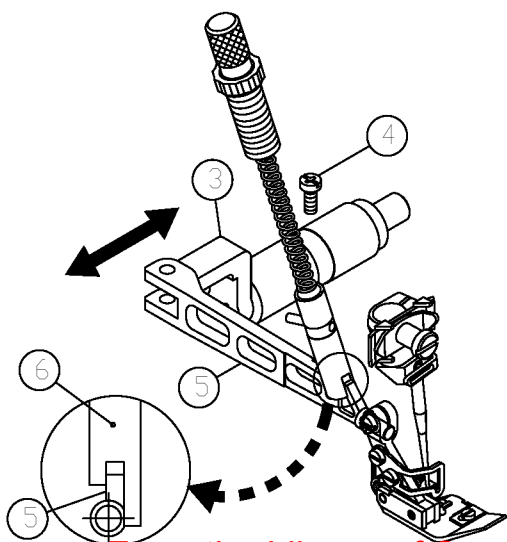
SET SCREW

PRESSER FOOT

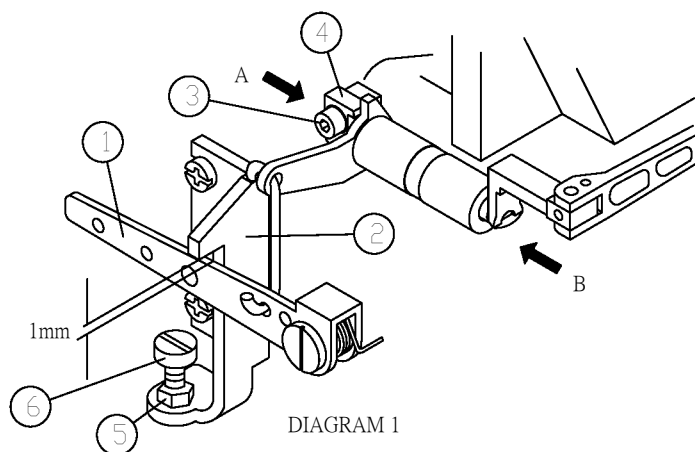
NEEDLE PLATE



1. TURNING HAND WHEEL IN ORDER TO LOWER THE NEEDLE BAR TO ITS LOWEST SET POSITION AND NEEDLE CAN BE MOVED INTO NEEDLE HOLE .
2. MAKE SURE THE NEEDLE HOLE OF PRESSER FOOT IN LINE WITH THE NEEDLE HOLE OF NEEELE PLATE AND SEWING NEEDLE IS IN THE CENTER OF NEEDLE HOLE . IN THE MEANTIME , THE BOTTOM OF PRESSER FOOT SHOULD LAY FLAT ON THE TOP OF NEEDLE PLATE (LEFT DIAGRAM)
3. TIGHTEN SCREW (2)
4. THE BOTTOM OF PRESSER BAR SHOULD HOLD PRESSER ARM PROPERLY . SO , PRESSER ARM CAN BE HELD AND RELEASED EASILY , WHILE ADJUSTING , LOOSEN SCREW (4) MOVE SHAFT (3) TO RIGHT OR LEFT IN ORDER TO SET UP CORRECT POSITION .

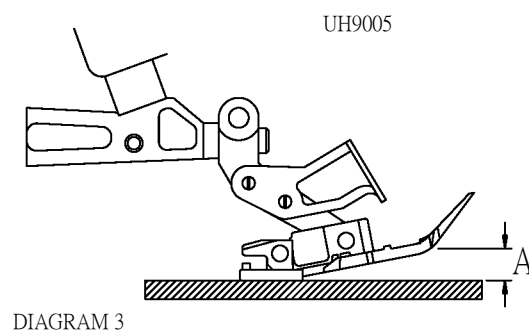
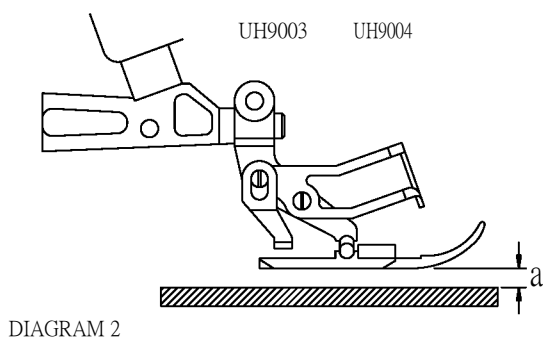


4-5 ADJUSTING THE LIFTING HEIGHT OF PRESSER FOOT :

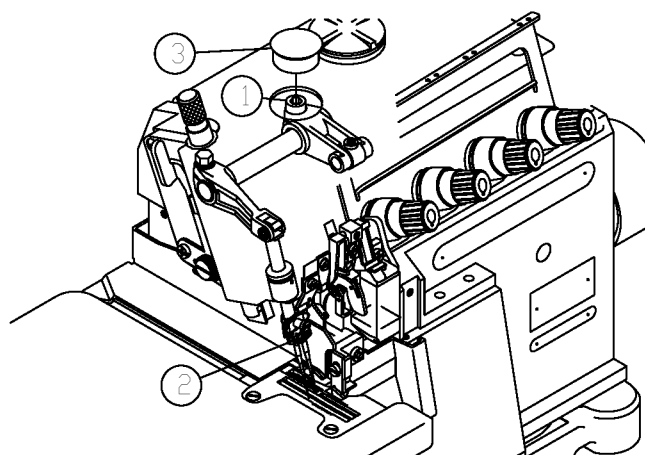


- SETTING TOLERANCE UP :
THE TOLERANCE BETWEEN LEVEL (1)
AND STOPPER SHOULD BE 1 mm .
1. LOWER FEED DOGS UNDER NEEDLE
PLATE BY TURNING HAND WHEEL .
 2. LOOSEN SCREW (3) LIGHTLY (CAN
NOT LOOSEN SCREW COMPLETELY .)
 3. HOLDING BUSHING FROM A AND B
SIDES TURNING COLLAR (4) IN
ORDER TO SET UP 1 mm TOLERANCE
BETWEEN LEVEL (1) AND STOPPER (2)
 4. TIGHTEN SCREW (3) .

SETTING UP PRESSER FOOT LIFTING AMOUNT :
AS SHOWN ON DIAGRAM 2 (UH9003,UH9004) AND DIAGRAM 3 (UH-9005)
MAX . PRESSER FOOT LIFTING AMOUNT "a" IS 7 mm .
WHEN ADJUSTING , LOOSEN NUT (5) AND ADJUST THE
TOLERANCE TO DESIRED POSITION BETWEEN SCREW (6) AND
LEVEL (1) .

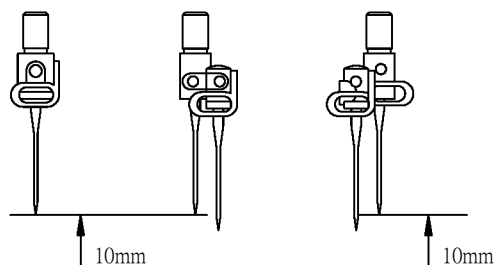


4-6. ADJUSTING THE HEIGHT OF NEEDLE .



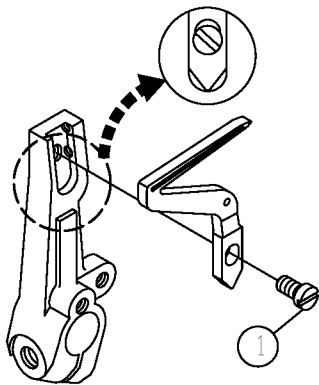
- THE DISTANCE BETWEEN NEEDLE TIP
TO TOP OF NEEDLE PLATE SHOULD BE
10 mm (STANDARD SETTING) .
PLEASE REFER TO LEFT DIAGRAM :
1. TURNING BELT PULLEY IN ORDER
TO RAISE NEEDLE BAR TO ITS
HIGHEST POSITION .
2. OPEN UP PLUG (3) AND LOOSEN
SCREW (1) .
3. ADJUST THE HEIGHT OF NEEDLE
BAR .
4. AFTER ADJUSTMENT PLEASE
MAKE SURE TIGHTEN SCREW (1) .

UH9003 UH9004 UH9005



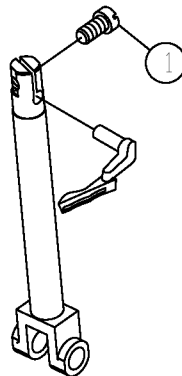
4-7. CHANGING LOOPERS.

4-7-1. CHANGING LOWER LOOPER:



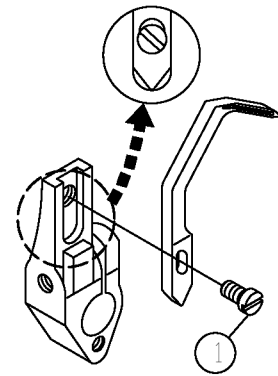
CHANGING LOWER LOOPER BY
TAKE OFF SCREW (1)
WHEN INSTALLING, PLEASE MAKE
SURE THE CRANK OF LOWER
LOOPER MUST ATTACH TO THE
BOTTOM OF GROOVE OF LOWER
LOOPER ARM CLOSELY.

4-7-2. CHANGING UPPER LOOPER:



CHANGING LOWER LOOPER BY
TAKE OFF SCREW (1)

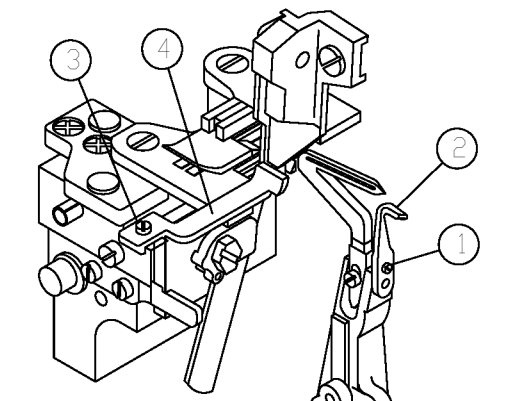
4-7-3. CHANGING CHAIN LOOPER:



CHANGING THE CHAIN LOOPER BY
LOOSEN SCREW (1),
WHEN INSTALLING, PLEASE MAKE
SURE THE CRANK OF CHAIN
LOOPER MUST ATTACH TO THE
BOTTOM OF GROOVE OF CHAIN
LOOPER ARM CLOSELY.

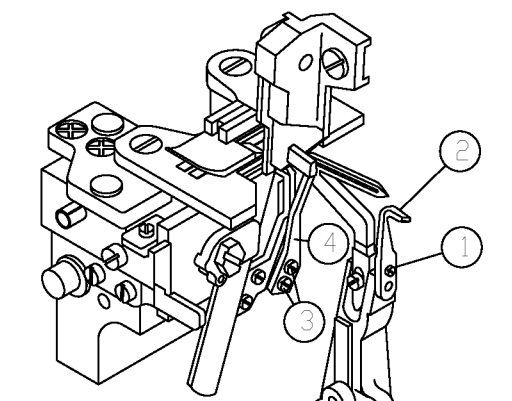
4-8. CHANGING NEEDLE GUARD:

4-8-1. CHANGING NEEDLE GUARD OF UH-9003, UH-9004

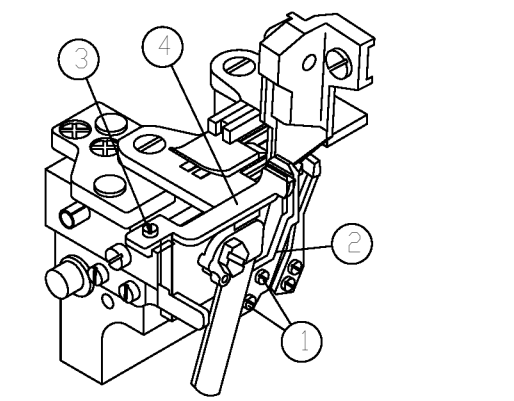


CAN TAKE OFF REAR NEEDLE GUARD (2)
BY LOOSEN SCREW (1) . LOOSEN SCREW (3)
CAN TAKE OFF FRONT NEEDLE GUARD (4)

4-8-2. CHANGING NEEDLE GUARD OF UH-9005



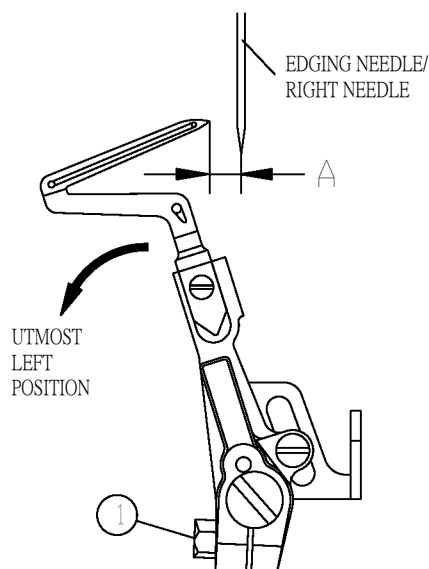
PLEASE TAKE OFF REAR NEEDLE
GUARD (2) BY LOOSEN SET SCREW
(1) . LOOSEN SET SCREW (3) CAN
TAKE OFF FRONT NEEDLE GUARD.



LOOSEN SET SCREW (1) CAN
TAKE OFF REAR
CHAINSTITCH NEEDLE
GUARD . LOOSEN SET SCREW (3)
CAN TAKE OFF FRONT CHAINSTITCH
NEEDLE GUARD,

4-9. SETTING UP LOOPER AND NEEDLE GUARD

4-9-1. SETTING UP LOWER LOOPER

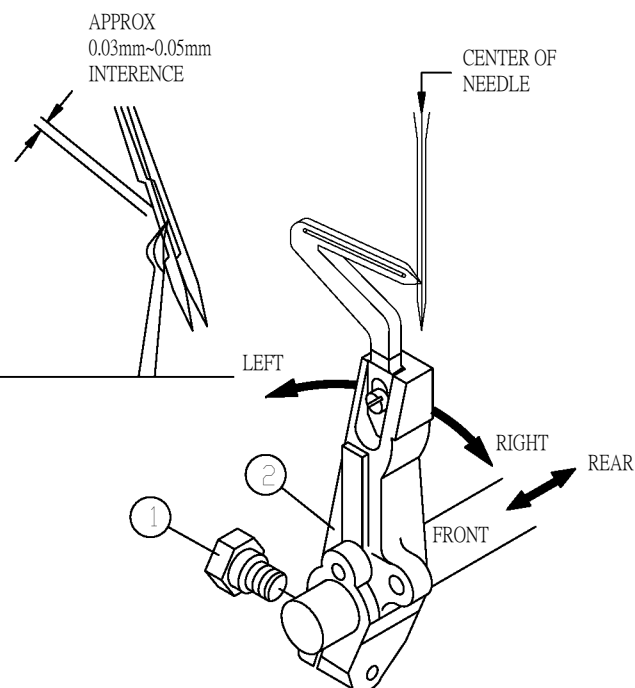


LOOSEN SCREW (1)

UNIT mm

MODEL	THE DISTANCE A BETWEEN TIP OF LOOPER AND THE CENTER OF NEEDLE(S)
9003	3.8~4
9004	3.6~3.8
9005	3.8~4

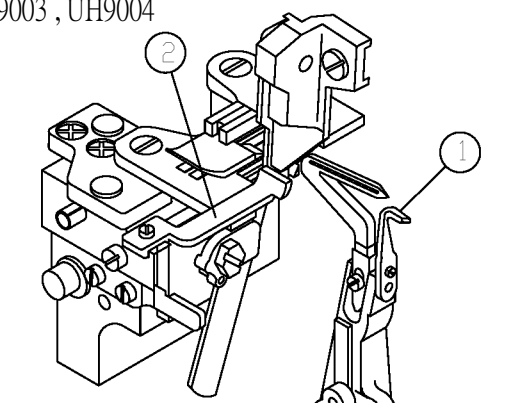
WHEN LOWER LOOPER MOVES TO ITS UTMOST LEFT POSITION, PLEASE REFER TO THE CHART ABOVE FOR THE DISTANCE A BETWEEN THE TIP OF LOWER LOOPER AND THE CENTER OF EDGING NEEDLE.



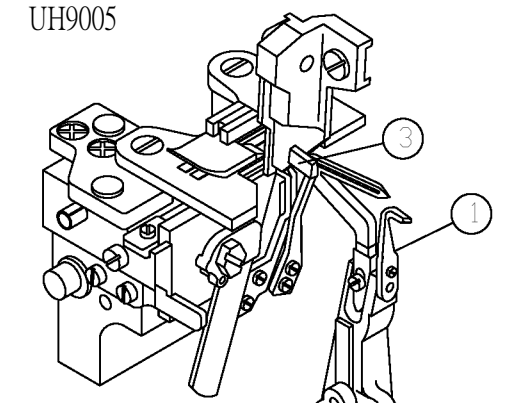
WHEN LOWER LOOPER MOVES FROM RIGHT TO LEFT AND THE TIP OF LOOPER MOVES TO EDGING NEEDLE/RIGHT NEEDLE, THERE WILL HAVE A INTERFERENCE APPROX 0.03mm TO 0.05 mm. LOOSEN SCREW (1) AND ADJUSTMENT CAN BE MADE BY MOVING LOOPER ARM FORWARD OR BACKWARD.

4-9-2. SETTING UP NEEDLE GUARD OF EDGING NEEDLE

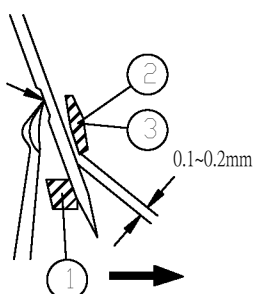
UH9003, UH9004



UH9005



TOLERANCE
0~0.05mm

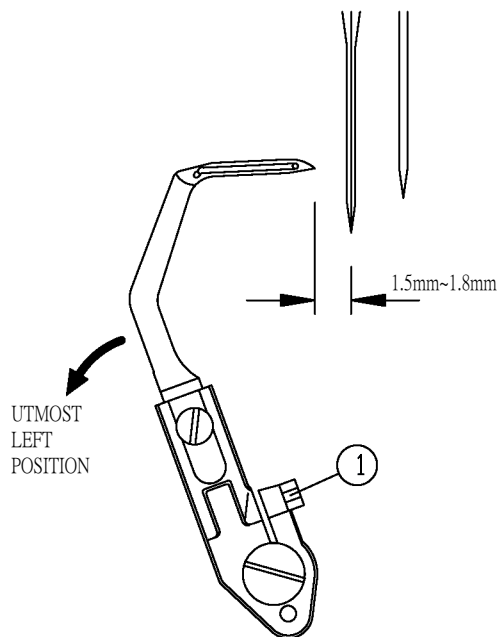


1. AS MENTIONED ABOVE, WHEN LOWER LOOPER MOVES TO THE CENTER OF EDGING NEEDLE, THERE WILL HAVE APPROX 0.03mm~0.05mm INTERFERENCE.

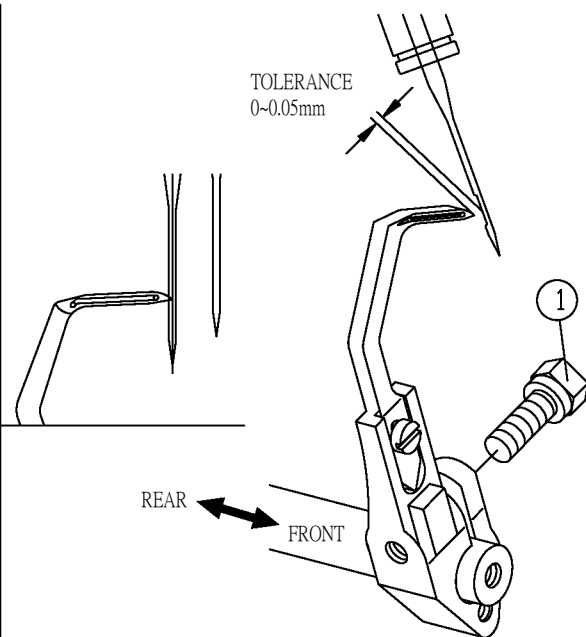
2. IN THE SAME TIME, ADJUSTING REAR NEEDLE GUARD (1) IN ORDER TO PUSH NEEDLE FORWARD AND CREATE A TOLERANCE OF 0~0.05mm BETWEEN NEEDLE AND THE TIP OF LOWER LOOPER.

3. IN THE SAME TIME, ALSO ADJUSTING FRONT NEEDLE GUARD (2) (UH-9003, UH-9004) (3) (UH-9005) TO CREATE A TOLERANCE OF 0.1mm~0.2mm BETWEEN FRONT NEEDLE GUARD AND NEEDLE.

4-9-3. SETTING UP CHAINSTITCH LOOPER



WHEN CHAINSTITCH LOOPER MOVES TO ITS UTMOST LEFT POSITION, THE DISTANCE BETWEEN TIP OF CHAINSTITCH LOOPER AND THE CENTER OF CHAINSTITCH NEEDLE SHOULD BE 1.5 mm . ADJUSTMENT CAN BE MADE BY LOOSEN SCREW(1).



WHEN TIP OF LOOPER MOVES TO THE CENTER OF CHAINSTITCH NEEDLE, THE TOLERANCE BETWEEN LOOPER TIP AND NEEDLE GROOVE SHOULD BE 0~0.05mm. ADJUSTMENT CAN BE MADE BY LOOSEN SCREW(1).

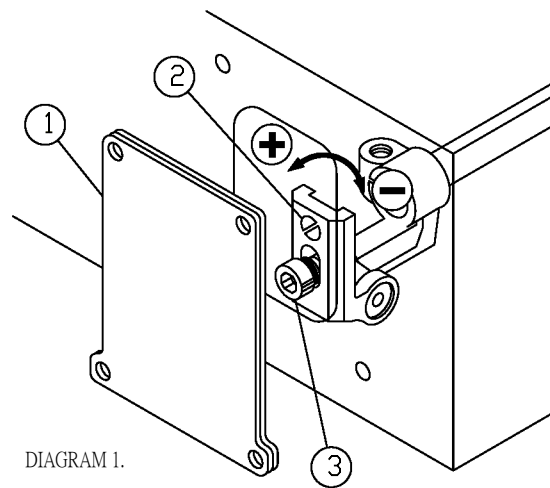
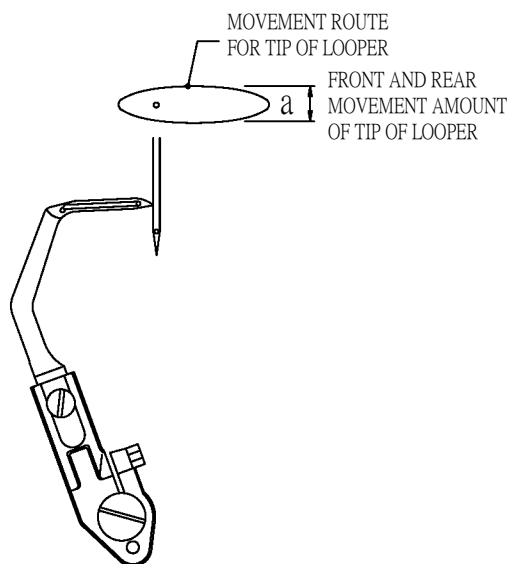


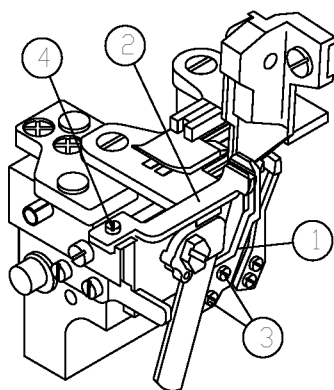
DIAGRAM 1.

WHEN CHANGING THE SIZE OF NEEDLE OR WHEN ADJUSTING THE FRONT AND REAR MOVEMENT AMOUNT OF TIP OF LOOPER.

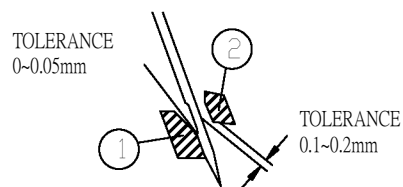
PLEASE REFER TO DIAGRAM 1.

1. PLEASE OPEN UP BACK COVER (1) OF SEWING MACHINE.
2. LOOSEN SCREW (3) A LITTLE BIT (PLEASE DO NOT LOOSEN SCREW (3) COMPLETELY.)
3. TURNING ADJUSTING SCREW (2).
4. TURNING TOWARD (+) DIRECTION IN ORDER TO OBTAIN BIGGER MOVEMENT.
TURNING TOWARD (-) DIRECTION IN ORDER TO OBTAIN SMALLER MOVEMENT.
5. AFTER ADJUSTMENT, PLEASE MAKE SURE TIGHTEN SCREW (3) AND BACK COVER (1).

4-9-4. SETTING UP NEEDLE GUARD OF CHAINSTITCH LOOPER.



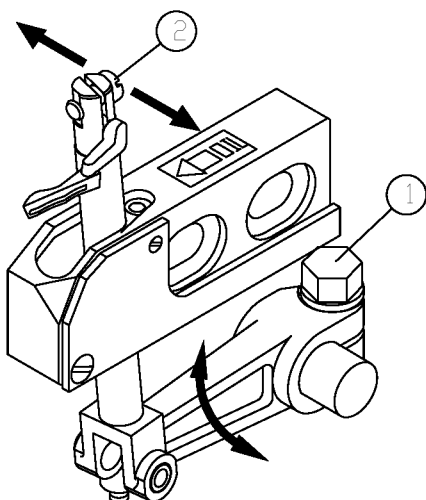
ADJUSTMENT CAN BE MADE BY LOOSEN SCREW (3),(4) AND AFTER ADJUSTMENT, MUST MAKE SURE TIGHTEN SCREWS.



WHEN CHAINSTITCH NEEDLE REACHED LOWEST POINT OF ITS STROKE, THE TOLERANCE BETWEEN REAR NEEDLE GUARD AND NEEDLE IS 0~0.05mm AND THE TOLERANCE BETWEEN FRONT NEEDLE GUARD AND NEEDLE IS 0.1~0.2mm.

4-9-5. SETTING UP UPPER LOOPER

DIAGRAM 1.



1.WHEN UPPER LOOPER MOVES TO ITS HIGHEST POSITION, THE DISTANCE BETWEEN TIP OF LOOPER AND CENTER OF NEEDLE SHOULD BE AS SPECIFICATION CHART LISTED BELOW AND ALSO PLEASE REFER TO DIAGRAM 2.

2.WHEN UPPER LOOPER PASSING THROUGH THE BACK OF LOWER LOOPER. PLEASE REFER TO DIAGRAM 3. FOR CORRECT TOLERANCE BETWEEN UPPER LOOPER AND LOWER LOOPER.

3.WHEN SETTING,PLEASE LOOSEN SCREW (1),(2) AS PER DIAGRAM 1. AND SET UP THE TOLERANCES BETWEEN UPPER LOOPER AND NEEDLE,UPPER LOOPER AND LOWER LOOPER AS PER SPECIFICATION CHART. THEN,TIGHTEN SCREW (1),(2).

DIAGRAM 2.

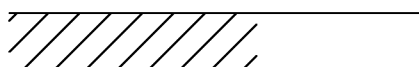
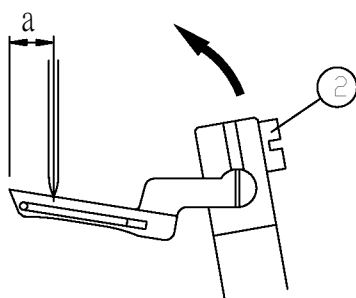
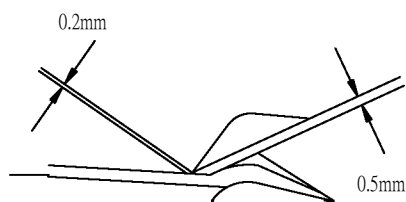
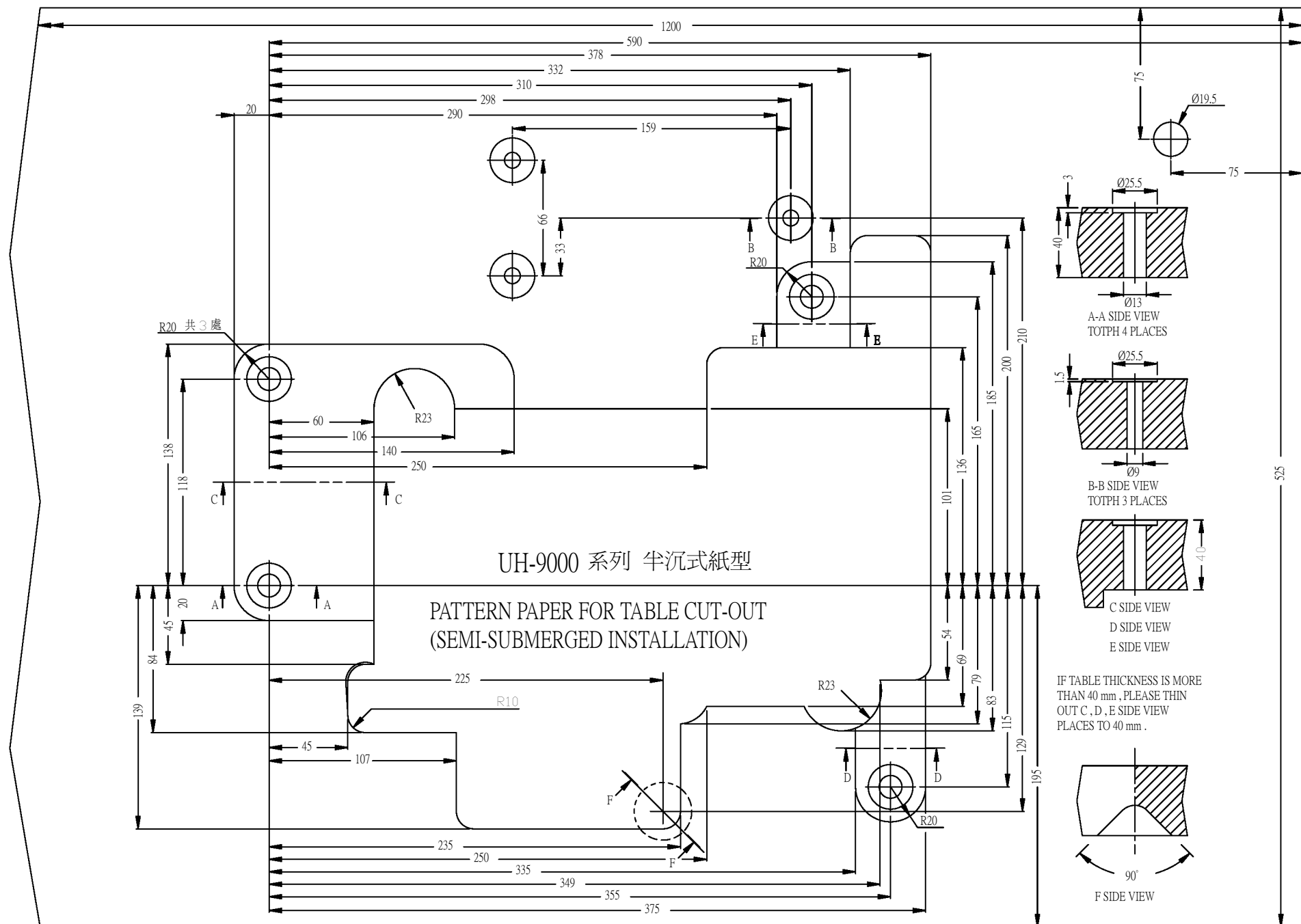


DIAGRAM 3.

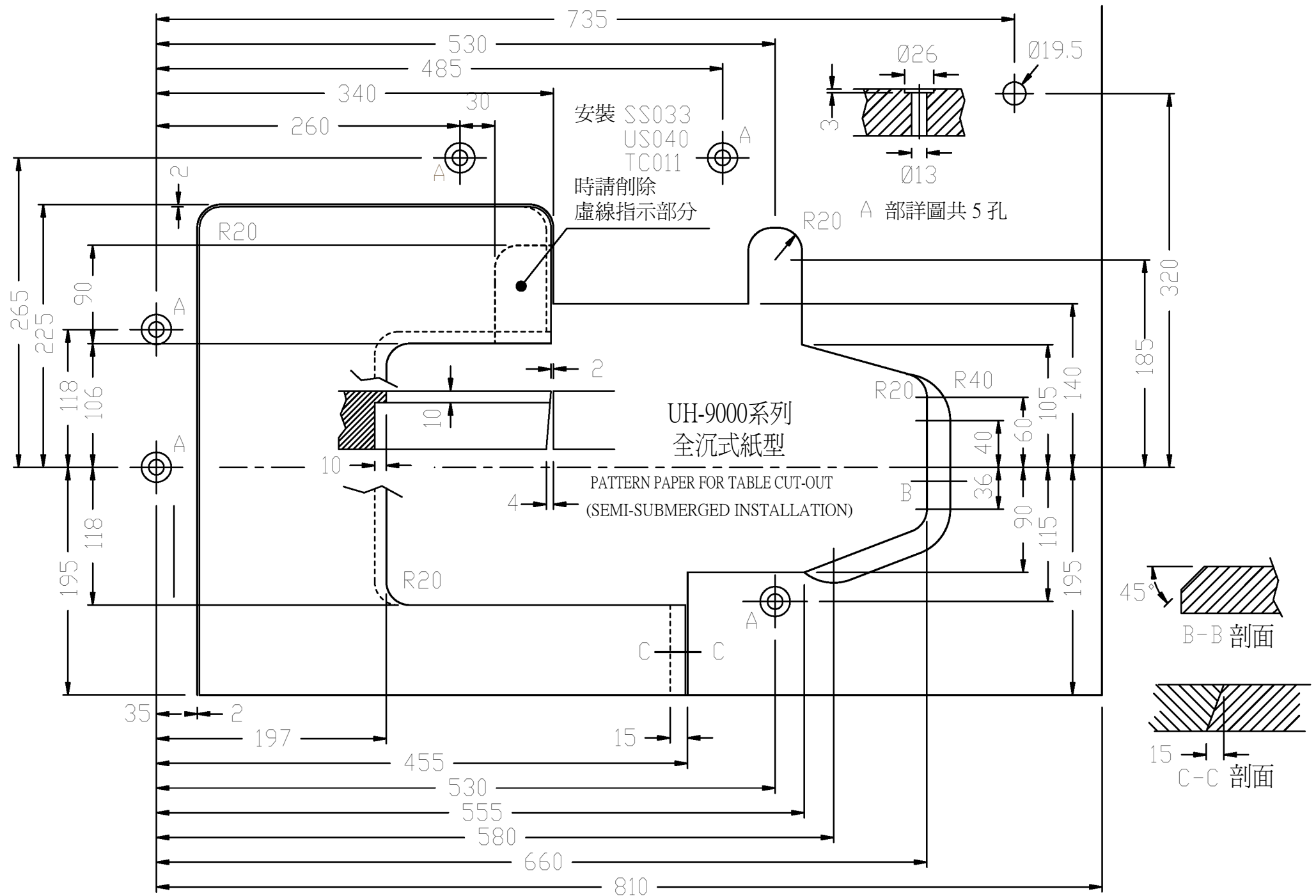


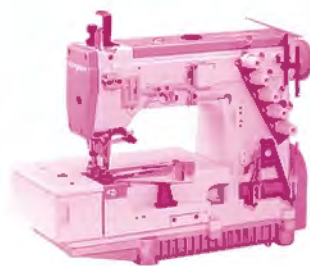
SPECIFICATION CHART

MODEL	a
UH9003(L)	4.5~5.0
UH9003	4.3~4.8
UH9004	4.5~5.0
UH9005	4.3~4.8
UH9005(H)	4.5~5.0



From the Library of Superior Sewing Machine & Supply LLC





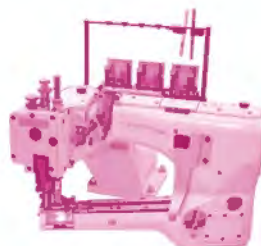
FT6503-0-56M
Tape Binding



MT4512P-050 / PMD / FR01
12-Needle Double Chain Stitch Machine
(Lower Feed Metering Device 、 Elastic hemmer)



UH9055-353-M16
Pocket Bags Seaming



NT67
4 Needle Flat-Seamer, Feed-Off-The-Arm Machine



精機機械廠股份有限公司
CHING CHI MACHINE CO., LTD
<http://www.kingtexsewing.com.tw>

The specifications and / or appearances of the equipments described in
this catalogue are subject to change without further notice.

本目錄所述產品, 因更新或改良, 可能不經事前預告, 而對產品之外觀, 規格, 內容進行修改, 特此聲明敬請鑒諒。